

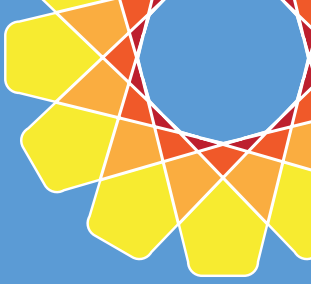
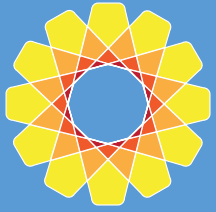


# Tinker or Transform? Making the Child Care Ideal Real



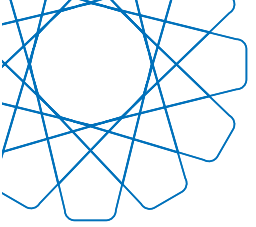
**We**Vision  
**EarlyEd**





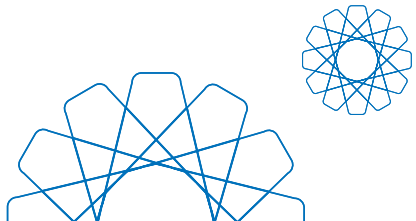
# Child Care Has Shifted

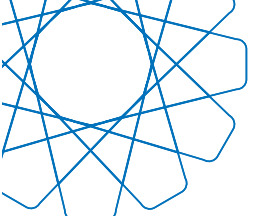




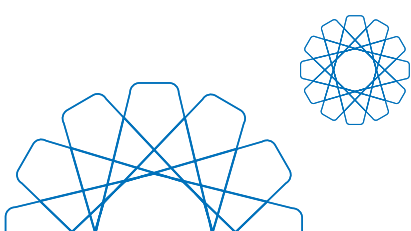
# Transformative Change is Not a Choice

- Increase media coverage
- Increase public funding
- Increase private funding
- Expanded advocacy base





# Transformative Change is Not a Choice

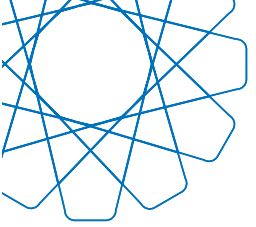




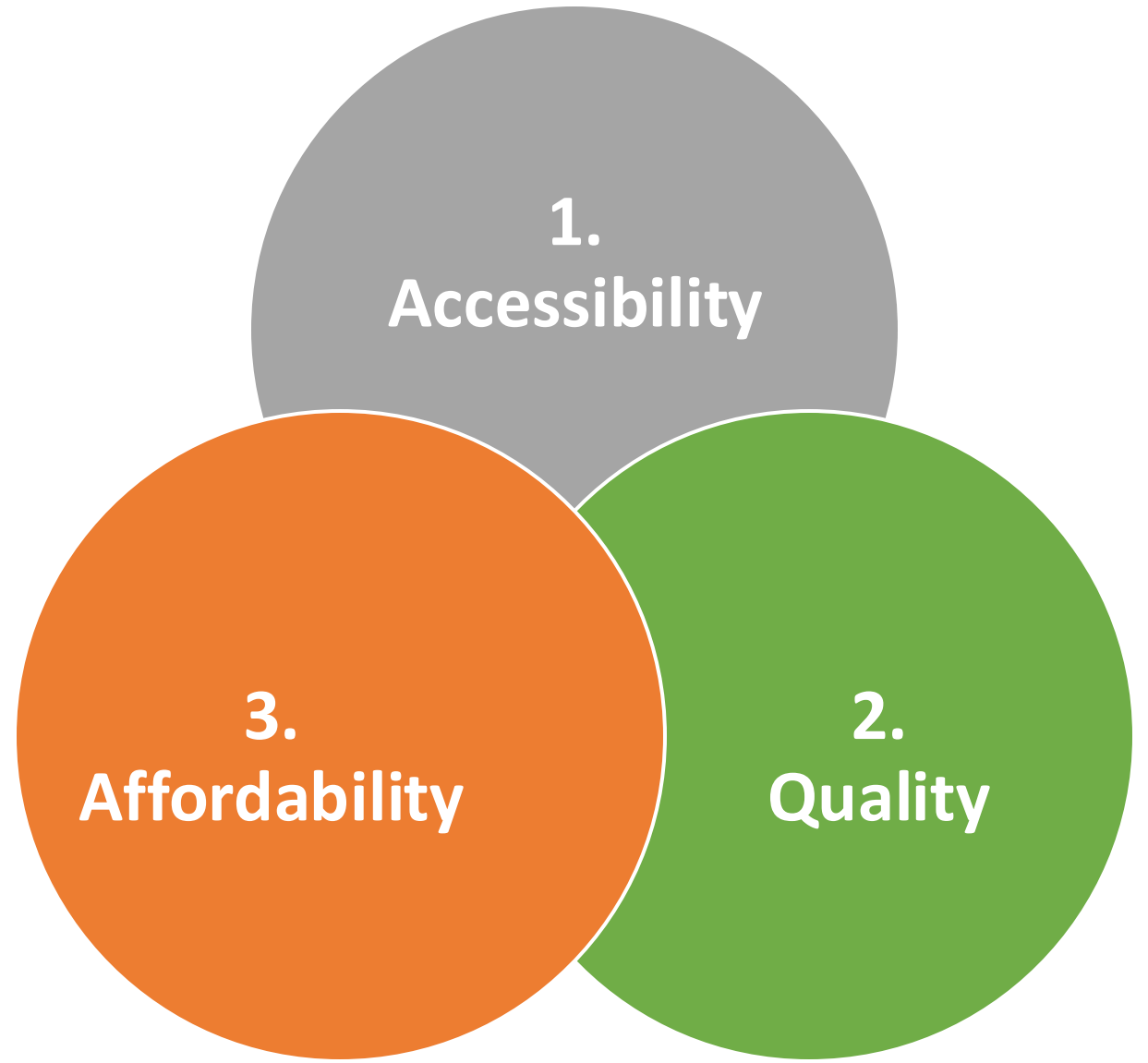
---

**“I don’t want to be a victim of the  
future of child care.  
I want to shape it.”**

early childhood professional

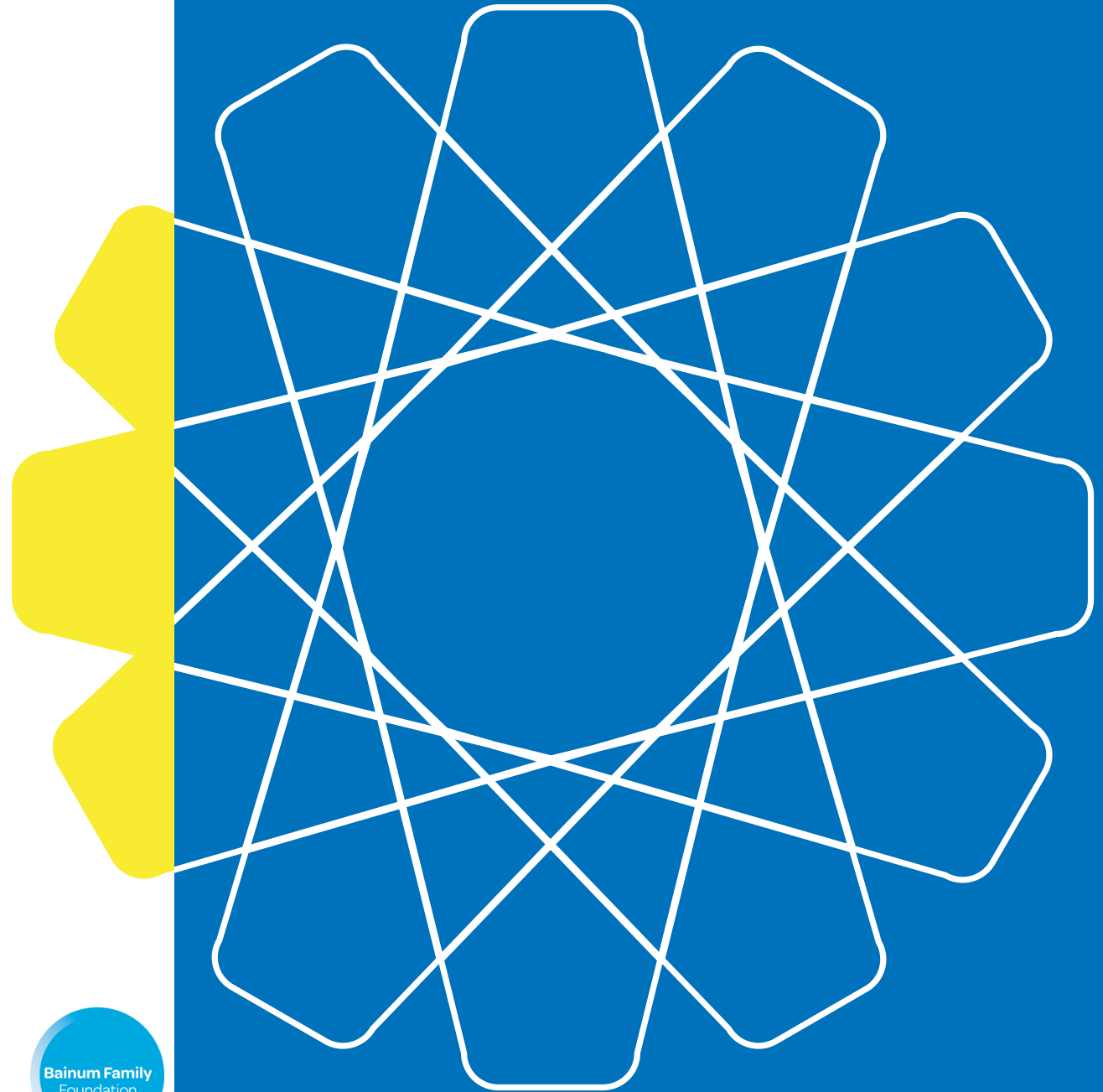


# Child Care Shifts



# WeVision EarlyEd

- Defining the Ideal
- Making the Ideal Real







**If you could design the District's ideal child care system, what would it look like?**

**Join our Innovation Community!**

We want to take a closer look at the early childhood education (or "child care") system in the District of Columbia so we can make it even more effective and equitable.

We know that the best people to reimagine a better system are those currently experiencing it – YOU.

YOU are the people who know the system best. You are the families who want quality early childhood education for your young children and the educators and administrators who make it happen.

Over the next five months, our grassroots innovation group will meet monthly to look at all aspects of the child care/early childhood education system: quality, affordability, availability and regulations. We want to get clearer about what's right – and unfair – with the current system... and most importantly, how we can work together to make it better.

# Data from D.C.

Fall 2021 – Spring 2022

- \* Data from 7 months with 35 proximity experts in D.C.





# National Data

Fall 2022 – Spring 2024

- \* Data from 2,000 “proximity experts” using an interactive conference exhibit
- \* Feedback from more 30+ conference sessions and convenings

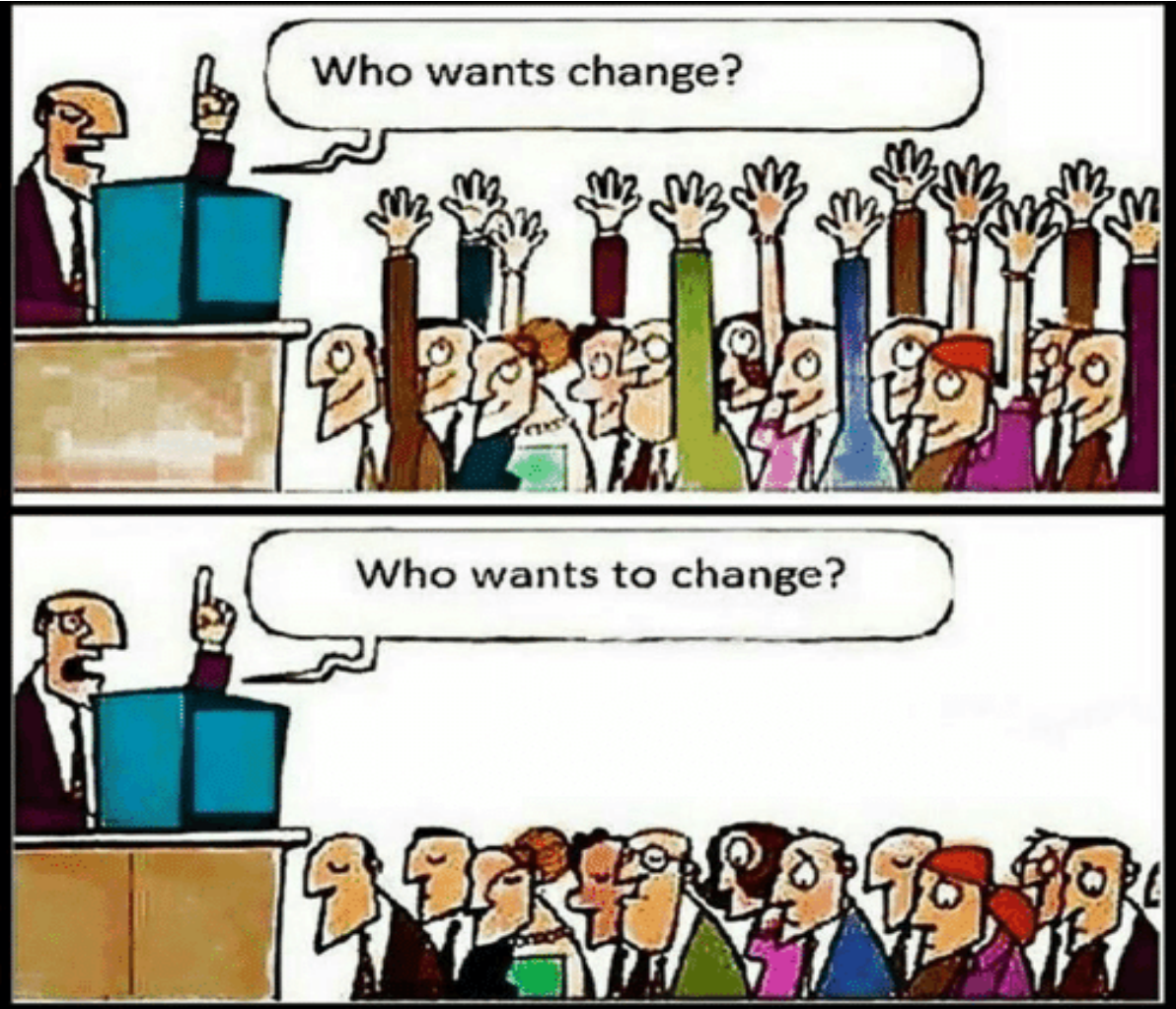




More Alike Than  
Different



# Change Required





---

**“What we cannot imagine cannot  
come into being.”**

bell hooks

# Clear and Funded Child Care Options

Early Childhood  
Education Program:  
**Center-Based**

Early Childhood  
Education Program:  
**Home-Based**

Early Childhood  
Education Program:  
**School-Based**

**Trusted Caregiver**  
*(e.g., Family, Nanny,  
Au Pair, Community  
Member, etc.)*



Meets baseline quality standards for early childhood education and receives comparable funding



Meets baseline quality standards defined by the family and receives some financial relief



WeVision EarlyEd



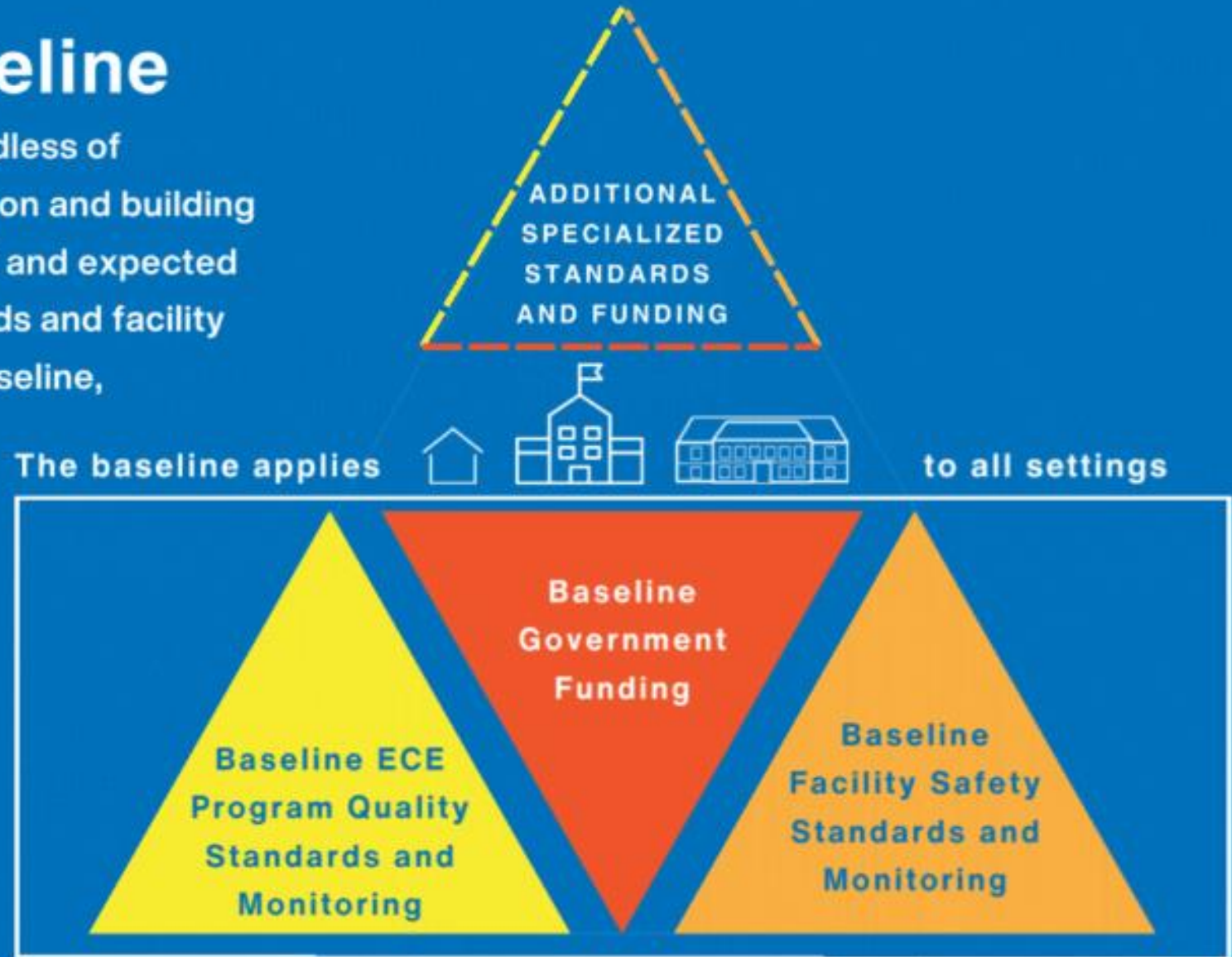
WeVision EarlyEd

# Build the Quality Baseline

All early childhood education programs, regardless of government funding source, geographic location and building type (i.e., home, center, school), are supported and expected to meet baseline ECE program quality standards and facility safety standards at a minimum. Beyond the baseline, other specialized standards and funding can be added.

## WHO IS MOST RESPONSIBLE?

- Industry-recognized ECE professional associations
- Federal, state and local government programs
- Government regulatory agencies



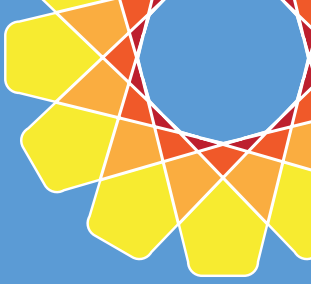
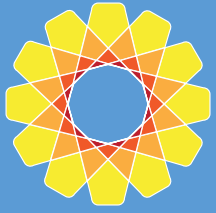




---

**“The future is already happening.”**

Trista Harris



[www.wevisionearlyed.org](http://www.wevisionearlyed.org)





# eLevate

CT'S QUALITY IMPROVEMENT SYSTEM



**CONNECTICUT**  
**Early Childhood**



**MEMBER**

## **MEMBER**

Licensed and license-exempt child care providers



**MEMBER +**

## **MEMBER+**

Licensed and license-exempt child care providers taking steps toward quality improvement with an Elevate Program Plan



**MEMBER  
ACCREDITED**

## **MEMBER ACCREDITED**

Meet national standards for early learning and education



- It's free!
- Leverages existing state and national infrastructure
- Leveling up is not required
- All licensed and license-exempt providers are automatically engaged as Members
- Member Accredited includes NAEYC accreditation, NAFCC accreditation, and Head Start/Early Head Start approval
- Service Navigators are experienced guides who connect providers to resources regardless of level of engagement



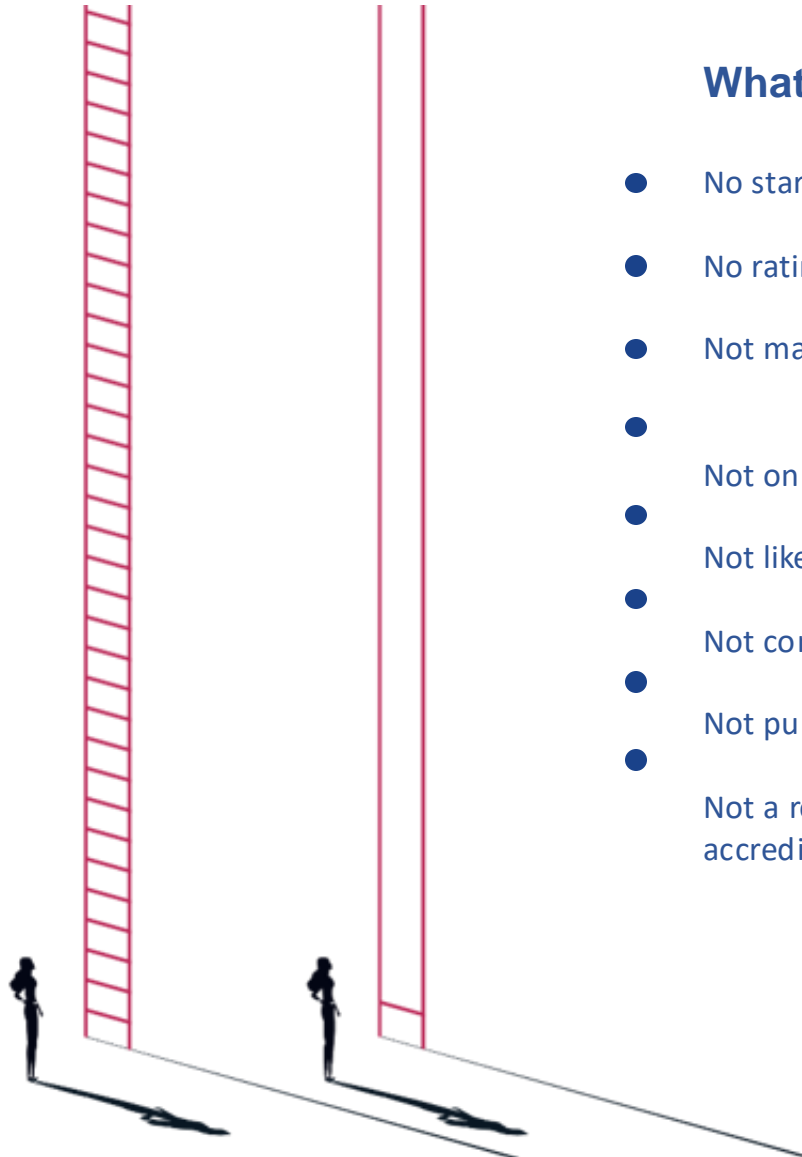
# A Quality System That Stands Out

## What it IS

- Supportive
- Sustainable for business
- Provides pathways
- Flexible—meets you where you are, navigates where you want to go
- Possibilities and vision-focused
- Innovative
- Inclusive—available to all providers
- No cost
- Offers accreditation readiness support (for those who want it)
- Offers credibility for the field

## What it IS NOT

- No stars
- No rating system
- Not mandated
- Not one size fits all
- Not like other states
- Not compliance-based
- Not punitive
- Not a replacement for accreditation/licensing





# Benefits Across The System

Benefit	Member	Member+	Member Accredited
Access to Service Navigation	✓	✓	✓
Access to Staffed Family Child Care Networks	✓	✓	✓
Access to AQIS	✓	✓	✓
Access to no-cost professional development	✓	✓	✓
Access to OEC scholarships	✓	✓	✓
Self-reflection Checklists	✓	✓	✓
Access to Service Navigator Visit Vouchers	✓	✓	✓
Elevate promotional packet for families	✓	✓	
Elevate Program Plan incentives, when available		✓	
Funding for accreditation fees		✓	✓
Financial incentives through Care 4 Kids			✓

# OEC Quality Improvement System Components



## Professional Development

Trainer Supports

Standards, Curriculum,  
Assessment Trainer Supports

Pyramid Model

Consultative Quality  
Improvement Supports



# Accreditation Quality Improvement Supports

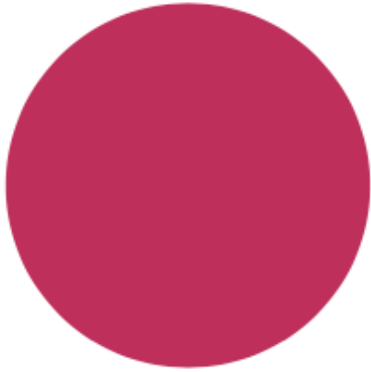


# Accreditation Offers Accountability

- Accreditation Standards set a national bar for quality
- A network of reliable, trained assessors ensure independent review of program practice
- Documentation of assessor review set the stage for program-level continuous improvement
- Random, unannounced assessor visits ensure programs are continuously working to meet standards
- Re-accreditation ensures stability
- Program supports build on the latest research and thinking about best practice

# eLevate Plans

CT'S QUALITY IMPROVEMENT SYSTEM



**MEMBER +**

- Elevate Program Plans and Elevate Renewal Plans include:
  - Focus Area
  - SMART Goals
  - Action Steps
  - Progress Tracking
- Elevate Renewal Plans include space for reflection on last year's goals
- Centers and group homes also submit Program Professional Development and Educator Professional Development Plans
- Approved Plans are valid for one year

## We're Digital!

- Providers access Program Plans on the OEC 360 Provider Portal (data portal for providers)
  - Focus Area for each plan can connect to professional development needs
  - Challenges and barriers allows us to look across our system (qualitatively)
- Service Navigators document feedback on the OEC 360 Provider Portal

### Elevate Program Plan



Fields marked by \* are required.



#### What is a SMART Goal?

SMART is an acronym that you can use to guide your goal setting. A SMART goal is Specific, Measurable, Achievable, Relevant, and Time-bound. SMART Goals will help make your plan actionable and measurable. Think about how you could break up your big picture goals from step 2 into concrete SMART goals. For more information about how to create SMART goals, [click here](#).

**Focus Area\*** ⓘ

Select One

**SMART Goal\*** ⓘ

Type here

**Action steps: What needs to happen to achieve the goal?\*** ⓘ

Type here

**Current Reality, Challenges, or Barriers\*** ⓘ

[Cancel](#)

SAVE



eLevate  
CT'S QUALITY IMPROVEMENT SYSTEM

**\$1,480** FOR CHILD CARE PROGRAMS  
**BONUS**



**CELEBRATING**  
OVER  
**200**  
**MEMBER+**

eLevate  
CT'S QUALITY IMPROVEMENT SYSTEM

**SUPPORT** 

**FOR CT'S FAMILY CHILD CARE PROVIDERS**

eLevate  
CT'S QUALITY IMPROVEMENT SYSTEM

 **RENEW =**  **REWARD**

eLevate  
CT'S QUALITY IMPROVEMENT SYSTEM

**BY NOV. 20**

eLevate  
CT'S QUALITY IMPROVEMENT SYSTEM

**CT CHILD CARE, CONTINUOUSLY IMPROVING**



- Invest in providers!
  - Offer system-level support and PD
  - Help providers plan
  - Create resources to help providers implement their own plans
- Resist the urge to build what already exists





**CONNECTICUT**  
**Early Childhood**

Deb Flis

Division Director, Quality Improvement  
CT Office of Early Childhood

[Deb.Flis@ct.gov](mailto:Deb.Flis@ct.gov)

[www.ctoec.org](http://www.ctoec.org)

[www.ctoec.org/elevate](http://www.ctoec.org/elevate)