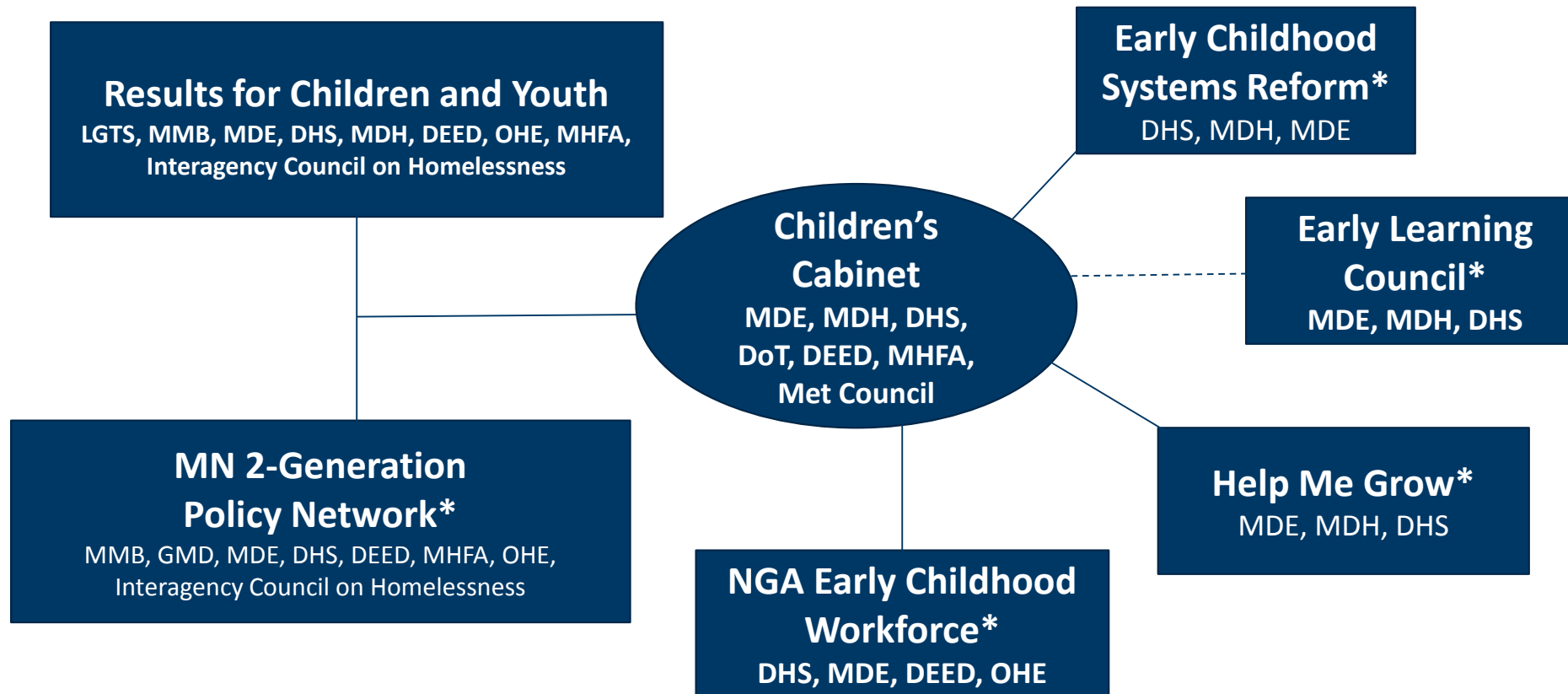




Minnesota Governor's Children's Cabinet

Kelly Monson, Executive Director

Early Childhood Systems Interagency Work



Children's Cabinet

**Children's
Cabinet**
MDE, MDH, DHS,
Dot, DEED, MHFA,
Met Council

Executive Director:

Kelly Monson

Current Cabinet Members:

MDE – Commissioner Brenda Casselius

DHS – Commissioner Emily Piper

MDH – Commissioner Dan Pollock

Current Sub-Cabinet Members:

MDE – Asst. Commissioner Hue Nuygen

DHS – Asst. Commissioner Jim Koppel

MDH – Asst. Commissioner Jeanne Ayers

Interagency Leadership Team Members:

Formerly division directors and key agency staff. ILT is being currently being recalibrated to best suit the new Children's Cabinet Structure

Note: In January 2018, Governor Dayton add the following agencies to the Children's Cabinet and Sub-Cabinet:

- Department of Employment and Economic Development
- The Metropolitan Council
- The MN Housing Finance Agency
- The MN Department of Transportation

Vision:

- By focusing on children facing racial, geographic, and economic inequities, all children in Minnesota will be born healthy and able to thrive within their families and communities.

Mission:

- Create an equitable system that supports pregnant and parenting families with young children. To do this families, communities, and government agencies will partner to eliminate structural racism and inequities that exist in access, policies, programs and practices.
- **Note:** *In January 2018, the Children's Cabinet formally adopted the Early Childhood Systems Reform Steering Committee Vision and Mission as its own.*

Core Strategies:

- Engage public stakeholders to build energy & will for a strong state early childhood system, and to inform our work with both community-based expertise and research-based best practices.
- Build & advance a transformative vision for public investments & supports for Minnesota children and families, through a two-generation approach.
- Identify and pursue opportunities for greater alignment and coordination across agencies, with a focus on increasing the accessibility of state resources.

Early Learning Council

Early Learning
Council*
MDE, MDH, DHS

- **Vision Statement:** *Every child deserves the opportunity to thrive. It is essential – for the child and the long-term prosperity of Minnesota – that young children are supported by their families and communities in achieving their maximum potential. In Minnesota, too many children start school unhealthy and not academically and socially ready to learn; too many start behind and don't catch up. The opportunity gap in Minnesota is growing. Fortunately, research shows that investing in high-quality early childhood programs and services can close the gap and yield an extraordinary return.*
- **Purpose Statement:** We share responsibility to provide a broad range of effective programs, services, family support and partnerships across Minnesota that promote the health and social, emotional and academic development of each child. In our efforts, we will reach across systems, cultures and geography to provide equal access to programs, services and support for all children and families, especially our most vulnerable children.
- The council will provide direction and advice to Governor Dayton, the legislature and other state leaders on early childhood issues including defining a unified network of public and private support services that prepare young children for success in school and life.

Results for Children (Children's Cabinet Meetings)

Results for Children and Youth
MMB, MDE, DHS, MDH, Met
Council, DEED, OHE, MHFA

Vision:

- Ensure all Minnesota youth thrive and are prepared to contribute to the World's Best Workforce.

Mission:

- Eliminate barriers and create opportunity so that all children experience safe, stable, and nurturing environments and relationships – at home, at school, and in the community – and:
 - All children are ready for school
 - All children succeed from elementary school to high school:
 - Post-secondary education is affordable, accessible, and useful:
 - These outcomes are universal, regardless of cultural, economic, and geographic backgrounds

Our Core Values:

- Equity & Inclusion
- Strong Families, Communities & Learning Environments
- Strong Systems

Help Me Grow

Help Me Grow*
MDE, MDH, DHS

Structural Requirements:

- Organizing Entity
- Scale and Spread
- Continuous System Improvement

HMG System Model:

- **Centralized Access Point**

A centralized access point that links families with young children to resources and services that address concerns about a child's health, development, behavior and learning

- **Child Health Care Provider Outreach**

Child health care and education provider trainings to educate community partners about the importance of early detection and intervention

- **Family and Community Outreach**

Community outreach to build awareness and promote the use of *Help Me Grow*

- **Ongoing Data Collection and Analysis**

A data system to evaluate the *Help Me Grow* system and guide continuous system improvement



MN 2-Generation Policy Network

MN 2-Generation Policy Network*

MMB, GMD, MDE, DHS, DEED, MHFA, OHE,
Interagency Council on Homelessness

Purpose: Direct service providers and state program administrators create a more effective publicly-funded system with whole families at its center.

1. Align and Collaborate

Better alignment and coordination of existing public programs/investments across state agencies, counties, and with local sites.

2. Invest

Bolster local implementation of 2-generation strategies and support innovations in and/or enhancements to whole family approaches.

3. Evaluate

Learn from Align and Invest strategies through evaluation

4. Engage and Communicate

Build broad base of understanding and support for 2-gen approach to policy and practice.

NGA Early Childhood Workforce

**NGA Early Childhood
Workforce***
DHS, MDE, DEED, OHE

Vision:

- Minnesota will have a well-trained, well compensated early childhood workforce as a critical component to providing early childhood care and education that supports Minnesota's communities and industry

Strategic Goals:

1. Raise base pay
2. Reward for quality (program level)
3. Reward for education (individual level)
4. Bring more resources into programs so they can pay better
5. Provide other resources to individuals (not base pay) to increase financial well-being

Approaches:

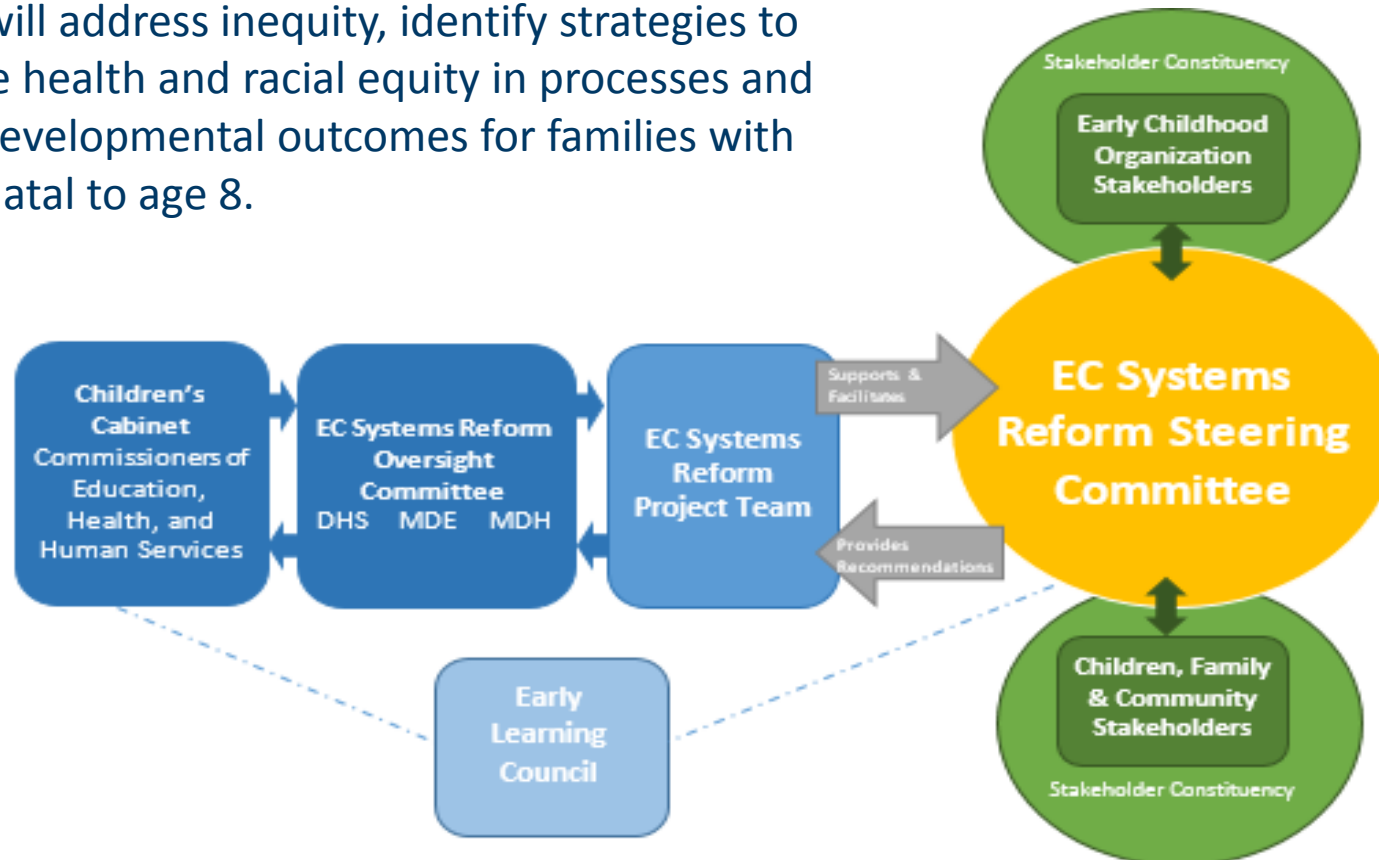
- Tax Credits
- Investing in Training and Education
- Loan Forgiveness
- Business Education and Shared Services
- Tying Compensation to State Funding and Quality Initiatives
- Wage Ladder
- Private Sector Support
- Career Pathways
- Increase Overall Funding for Early Childhood Care and Education

Recommendations will be made to the Children's Cabinet and Governor based on approaches

Early Childhood Systems Reform

**Early Childhood
Systems Reform***
DHS, MDH, MDE

The reform efforts will address inequity, identify strategies to promote and ensure health and racial equity in processes and systems as well as developmental outcomes for families with young children prenatal to age 8.



Contact Us

- Executive Director: Kelly Monson
 - Kelly.monson@state.mn.us
- Managers: Amira Adawe and Jennifer Moses
 - Amira.adawe@state.mn.us
 - Jennifer.Moses@state.mn.us
- Executive Assistant: Jasmine Carey
 - jasmine.carey@state.mn.us



A Collaborative Effort of the Minnesota Governor's Children's Cabinet

Interagency Early Childhood Systems Reform project



Kelly Monson | Children's Cabinet Executive Director

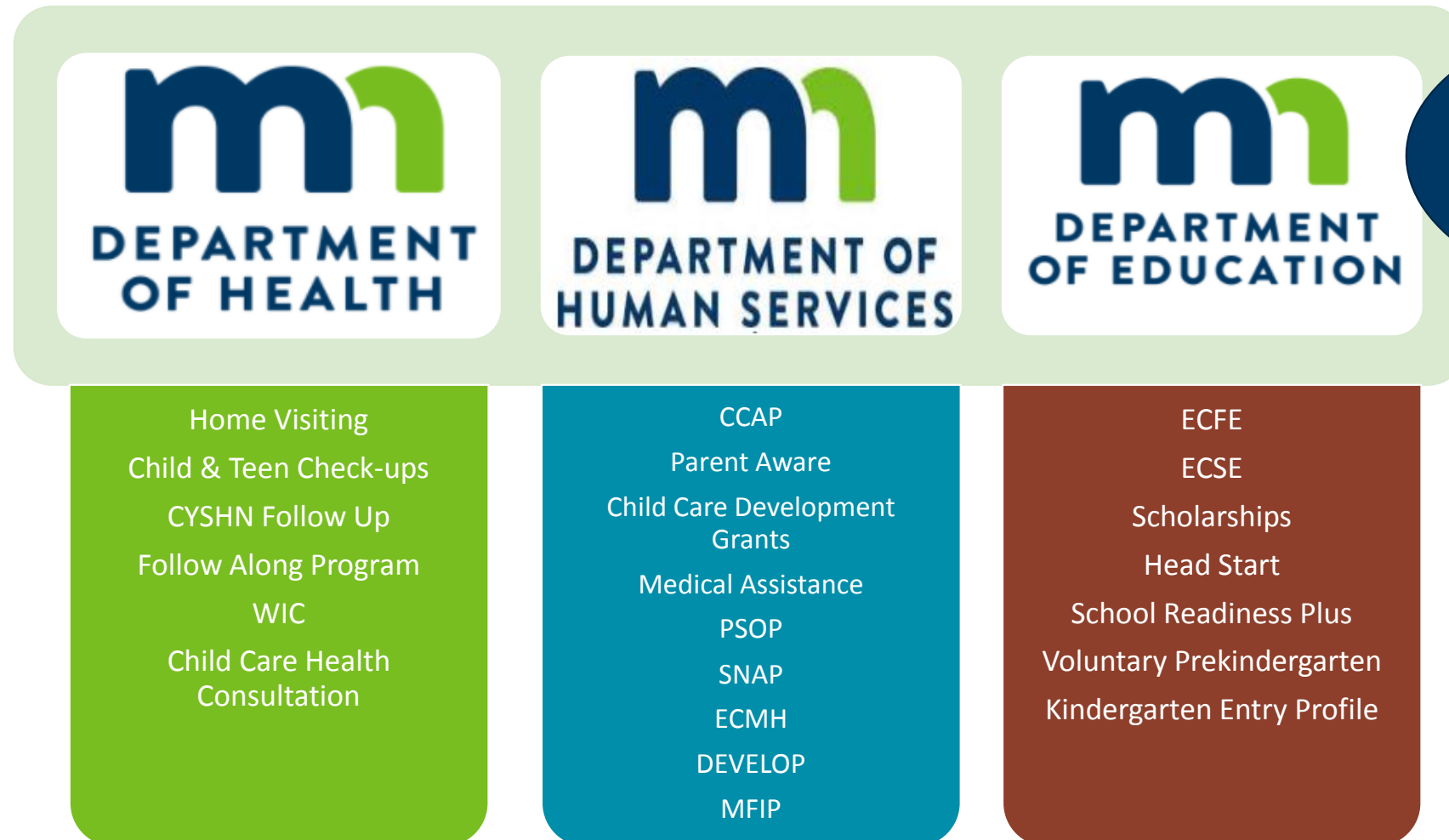
Cindi Yang | DHS Child Care Services Division Director

Tracy Roloff | Early Childhood Systems Reform Project Manager

A lack of equitable opportunity has caused significant disparities in developmental outcomes for children prenatally through age 8.

State commitment to continuous improvement

MN's current landscape of state EC programs & services

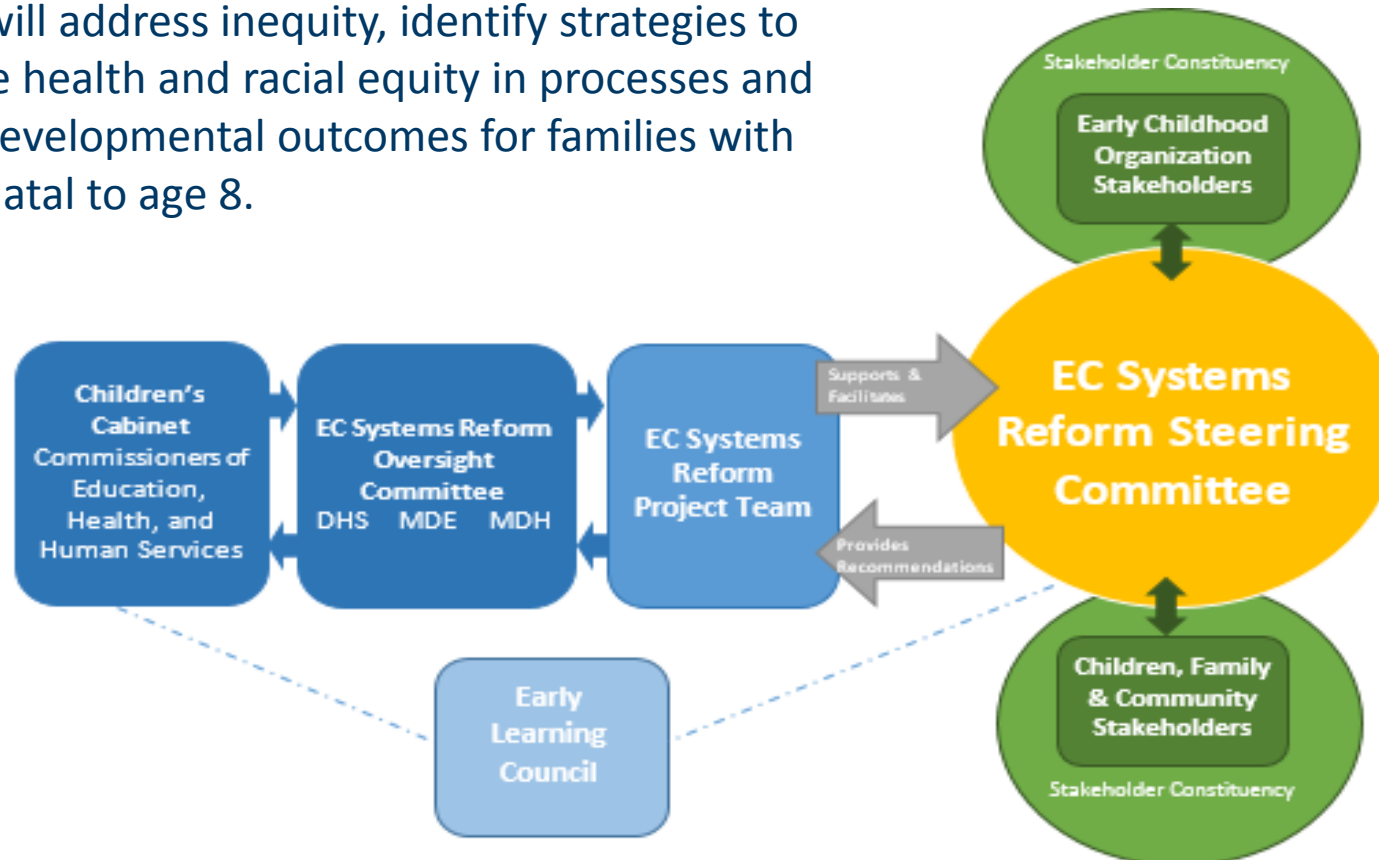


Recently expanded
Children's Cabinet
will expand this list!

Early Childhood Systems Reform

**Early Childhood
Systems Reform***
DHS, MDH, MDE

The reform efforts will address inequity, identify strategies to promote and ensure health and racial equity in processes and systems as well as developmental outcomes for families with young children prenatal to age 8.



Early Childhood Systems Reform

**Early Childhood
Systems Reform***
DHS, MDH, MDE

Vision	By focusing on children facing racial, geographic, and economic inequities, all children in Minnesota will be born healthy and able to thrive within their families and communities.				
Mission	Create an equitable system that supports pregnant and parenting families with young children. To do this families, communities, and government agencies will partner to eliminate structural racism and inequities that exist in access, policies, programs and practices.				
Goal Areas	Early Learning	Health & Wellbeing	Economic Security	Safe Stable Nurturing Relationships	
Focus Areas	Early Care & Education	Healthy Birth & Development	Housing & Community Design	Government Partnership with Community	Family & Community Supports

Organization	Partner	Organization	Partner
Minority Child Care Association	Ikram Mohamed	White Earth Nation Community Representative	Barb Fabre
Special Education and Family Voice	Mai Chang; Zang Vang Lee	MN Coalition for Targeted Home Visiting	Laura LaCroix-Dalluhn
People Serving People	Daniel Gumnit	Greater Minnesota Tribal Nations	Lee Tourney, Leech Lake Band of Ojibwe
Tri-Valley Opportunity Council	Laurie Coleman	Coalition of Asian American Leaders	Kaying Yang
Voices and Choices for Children	Bharti Wahi	Isuroon (Somali Community)	Fartun Weli
American Academy of Pediatrics	Krishnan Subrahmanian	CLUES	Ruby Azurdia-Lee
Minnesota Initiative Foundations (MIFs)	Nancy Jost	Professional Organization: MNAFEE	Monica Potter
Head Start Association (Early Head Start)	Kraig Gratke	Cultural and Ethnic Communities Leadership Council	Vayong Moua
MN Indian Women’s Resource Center	Patina Park	Minneapolis Cradle to K, Think Small, Voices & Choices, Early Learning Council	Dianne Haulcy
Family Voice: Parent Leadership Team	Danielle Swift	Family Voice: Head Start Parent Council	Loren Groves
Family & Provider Voice: Rural (Duluth)	Melissa Meyer	Family Voice: Rural (Ely)	John Soghigian
State Agency Ex-Officio Members			
Minnesota Department of Human Services	Jim Koppel; Cindi Yang; Jovon Perry	Minnesota Department of Health	Jeanne Ayers; Joan Brandt
Minnesota Department of Education	Hue Nguyen; Bobbie Burnham	Minnesota Housing Finance Agency	Ryan Baumtrog

Steering Committee Representatives

Early Childhood Systems Reform Year One Timeline

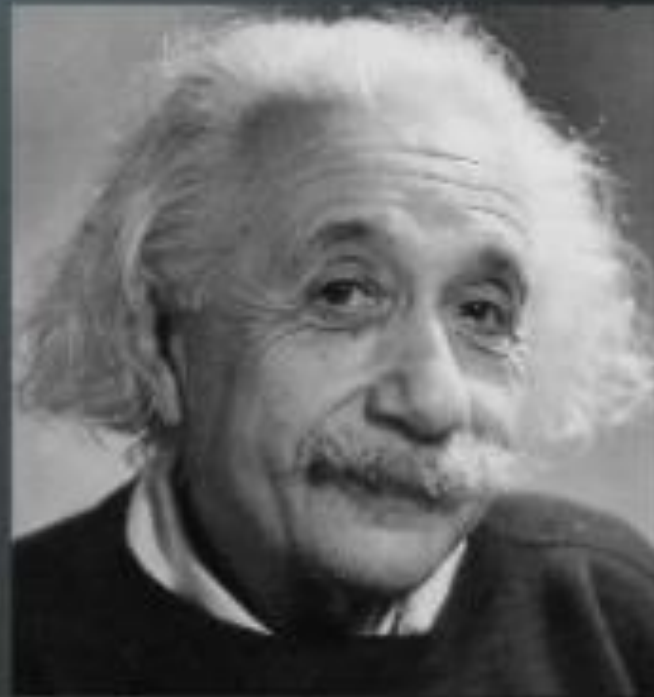


MN Early Childhood Systems Reform Theory of Change


Guiding Lenses 1. Cultural Relevance 2. Equity 3. Leveraging Family & Community Assets 4. Support Long-Term, Whole Family Stability 5. Brain Science 6. Integration of Strategies to Break Down Silos 7. Acute & Historical Trauma	Vision	By focusing on children facing racial, geographic, and economic inequities, all children in Minnesota will be born healthy and able to thrive within their families and communities.				Defines the future reality we are working to create.	
	Mission	Create an equitable system that supports pregnant and parenting families with young children. To do this families, communities, and government agencies will partner to eliminate structural racism and inequities that exist in access, policies, programs and practices.				Describes how we will create the future.	
	Goal Areas	Early Learning	Health & Wellbeing	Economic Security	Safe Stable Nurturing Relationships	Focus the Vision into tangible, achievable outcomes.	
	Focus Areas	Early Care & Education	Healthy Birth & Development	Housing & Community Design	Government Partnership with Community	Family & Community Supports	Provide focus for our Recommendations. Interrelated and drive change in several Goal Areas.
	Problem Statements	TBD	TBD	TBD	TBD	TBD	Within and across Focus Areas. When solved, drive improvement in our Goal Areas and achievement of our Vision.
	Recommendations	-Immediate actions -Proposed policy changes for 2019 session & beyond -Areas for additional community engaged research				Outlines a short and long term early childhood systems reform action plan.	

Identify the Problem

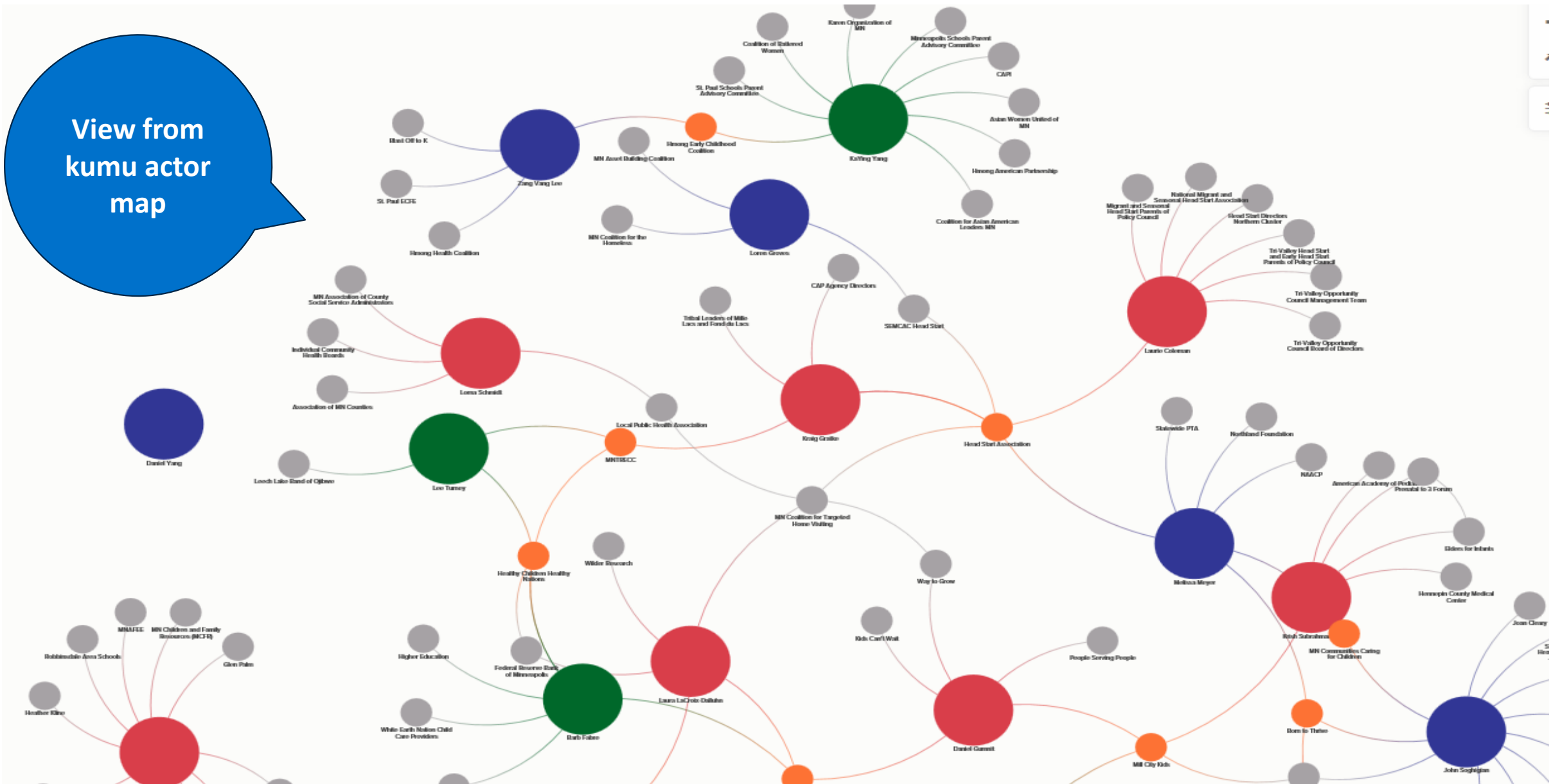
“If I had only one hour
to save the world I
would spend fifty-five
minutes defining the
problem and only five
minutes finding the
solution.”



Albert Einstein



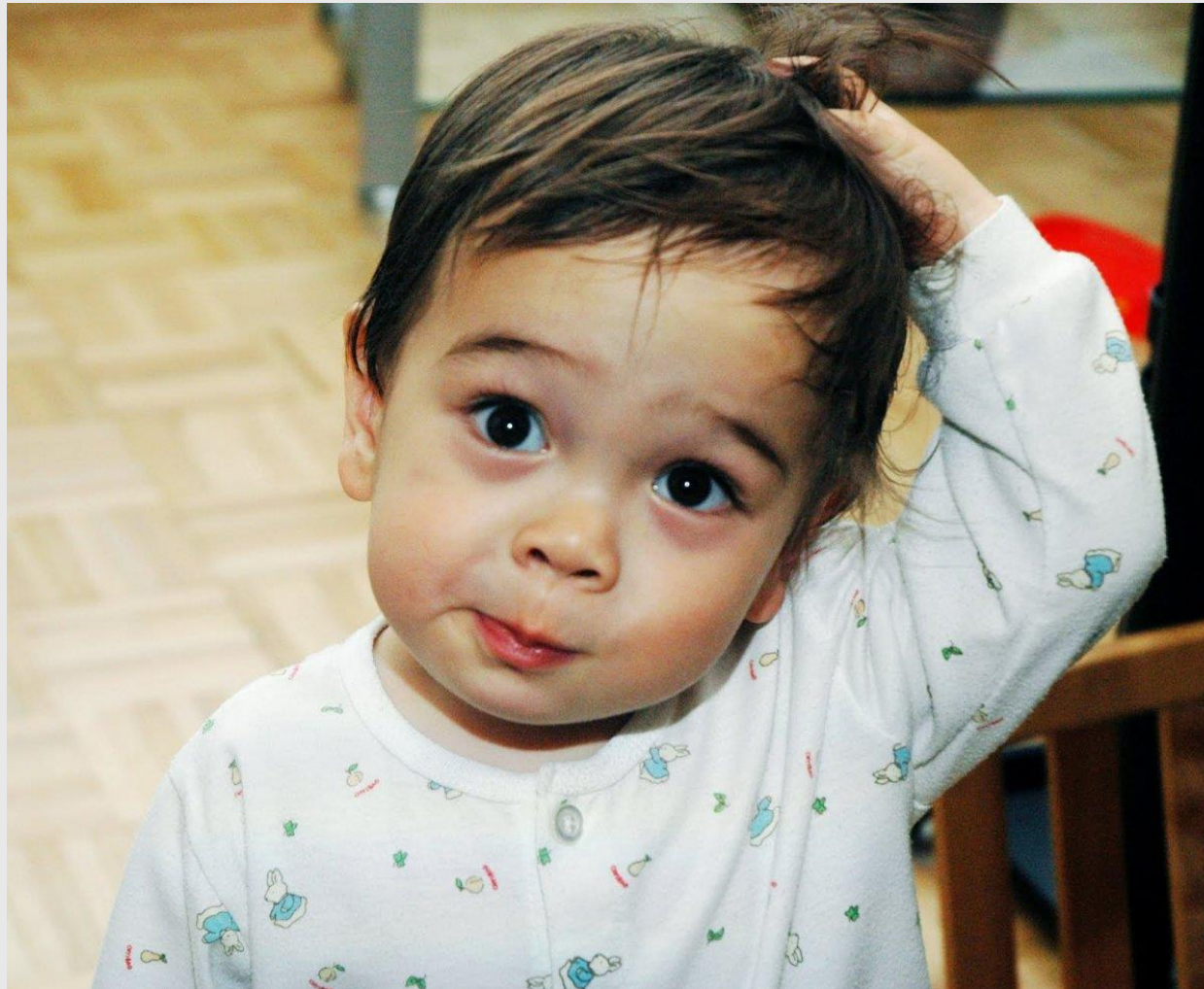
**View from
kumu actor
map**



Next Steps: Engaging Our Networks

- Interim Report: Just Released February 28th, 2018
 - Find it here: <https://mn.gov/governor/issues/childrens-cabinet/>
 - Includes the 2018 inventory of Minnesota Services and Supports for Families with Young Children.
- Final Year One Report: June 30th, 2018
- Year Two Begins: July 1st, 2018
 - Implementation of Year One Actions
 - Human Centered Design Deep Dive
 - Tested process and refined mechanism for community engagement in state practice, program and policy reform.

Questions?



Thank You!

Tracy Roloff

Tracy.roloff@state.mn.us

651-431-5569

Cindi Yang

Cindi.Yang@state.mn.us

651-431-3828